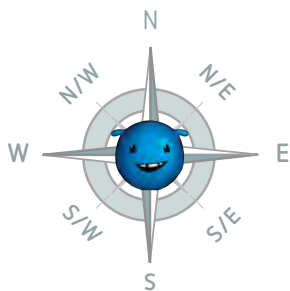


# The United Kingdom

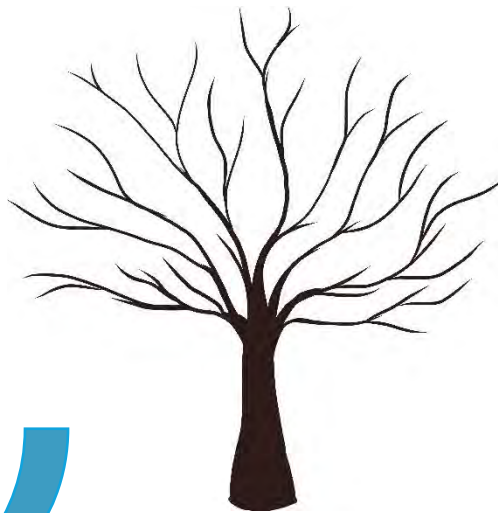
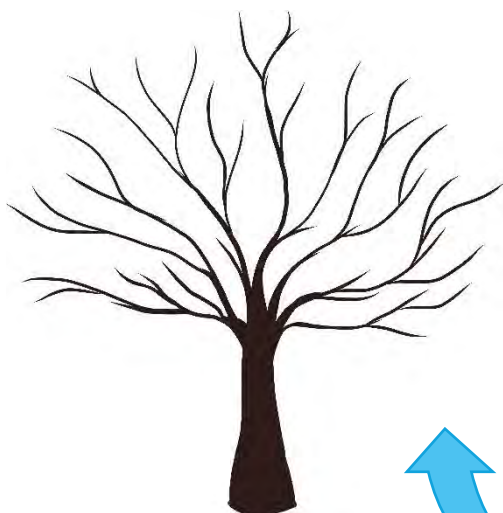
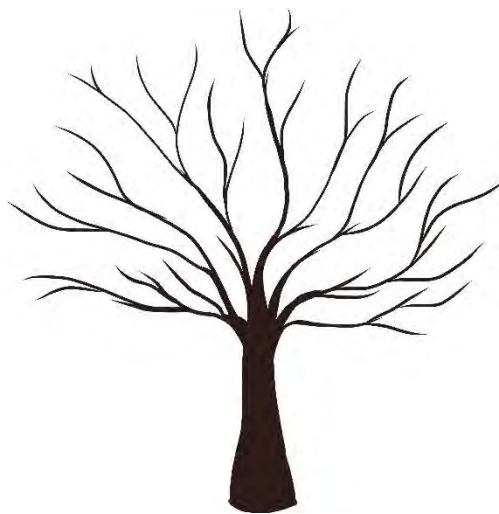
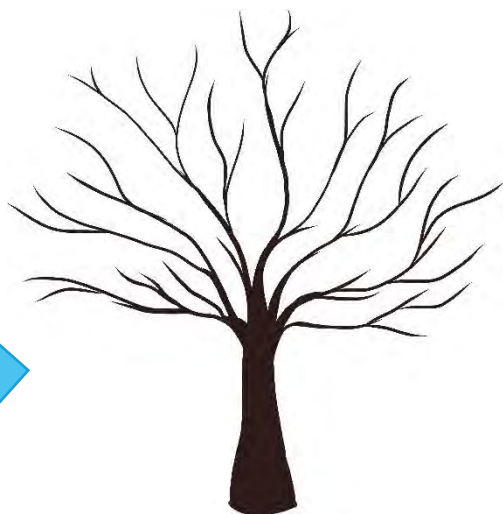




# How Seasons Change

Spot the differences between the seasons.

Autumn



freezing	cloudy	rainy	hot	windy
sunny	frosty	warm	misty	cold

---

freezing	cloudy	rainy	hot	windy
sunny	frosty	warm	misty	cold

---

freezing	cloudy	rainy	hot	windy
sunny	frosty	warm	misty	cold

---

freezing	cloudy	rainy	hot	windy
sunny	frosty	warm	misty	cold

---

freezing	cloudy	rainy	hot	windy
sunny	frosty	warm	misty	cold

---

freezing	cloudy	rainy	hot	windy
sunny	frosty	warm	misty	cold





# Jobs affected by the weather



Explore how the weather affects different jobs.



Builder



Farmer



Fisherman



Ice cream seller



Postal worker



Taxi driver



Teacher



Pilot





## Jobs affected by the weather



Explore how the weather affects different jobs.



---

---

---

---

---

---

---

---

---

---

---

---



# Season Explorer Scavenger Hunt



Find clues to decide which season we are in.

I can see...	Tick
Autumn	
Red or orange leaves	
Leaves on the ground	
Acorns	
Windy weather	
Winter	
Snow	
Fog	
Trees without leaves	
Gloomy weather	
Spring	
New flowers	
Rain	
Daffodils	
Buds	
Summer	
Sunshine	
Daisies	
Flowers	
Green leaves	


Discuss with a partner what season you think it is.



# Weather and Seasons I Spy



Find clues to decide which season we are in.



I spy...	Tick	Where is it?
A place where rain water collects		
Something that changes colour in autumn		
Somewhere that doesn't get wet		
A place where snow needs to be removed		
A good place to build a snowman		
Something that is moved by the wind		
A place where new plants grow		
Something that can be knocked down by the wind		
A place where flowers grow		
A place to shelter from the rain		
A place to find shade from the sun		
Somewhere an icicle could grow		

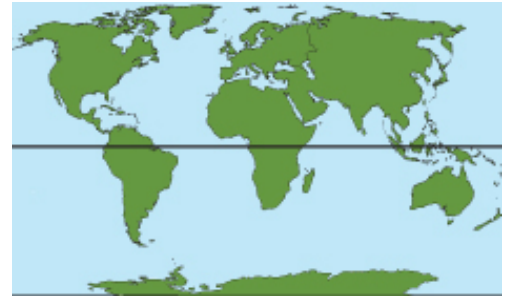
**Draw the weather outside now**



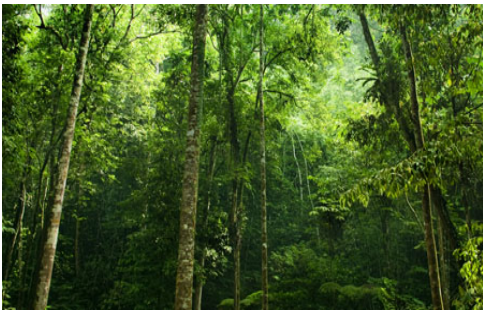
## The hottest places on Earth are found near to the Equator.

The Equator is an invisible line that splits the Earth into two halves.

It is halfway between the North Pole and the South Pole.



A map showing the Equator



Rainforest

Rainforests, deserts and savannas are all close to the Equator.

These are all hot.



Sahara Desert

Rainforests are hot and wet places. They're perfect for all kinds of life.

Hot deserts have very dry weather. Very few plants and animals can stay alive in deserts.



Savanna

Savannas are sometimes wet, sometimes dry.

They are grasslands: home to elephants, lions and zebras.



### Key words:

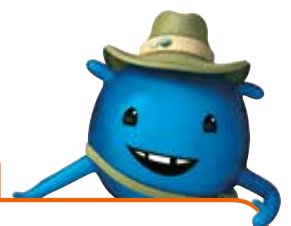
deserts

Equator

invisible

rainforests

savannas



## Guided Reading – Hot Places Discussion Sheet

### **Before Reading – Prediction activity**

Ask your students these questions before and after reading the text. Have students skim the text to help with prediction before reading.

Statement	Before	Reading	After	Reading
	Yes	No	Yes	No
A. Based on the pictures, you are going to read about cold places.				
B. The North Pole is a hot place.				
C. Rainforests are hot places.				
D. Penguins live in hot places.				

**During Reading** – Help with pronunciation, understanding and decoding.

**After Reading** – Have students complete the following activities on an erasable white board or on a blank sheet of paper. Students should share responses after each question. You can document responses below.

1. Where is the Equator found on Earth?
2. Find one word in the text that is used to describe a desert.
3. Write a new word you have learned in this text. (Check spelling)
4. Draw an animal that lives in a savanna.

Notes:

# HOT PLACES

**Finish the sentences.**

1. The hottest places on Earth are found near to the

\_\_\_\_\_.

2. The Equator is half way between the North Pole and

\_\_\_\_\_ Pole.

**Tick the answer.**

3. Which is **NOT** a hot place?

Rainforest ☐

Savanna ☐

Antarctica ☐

Sahara Desert ☐

4. Which of these words describes a rainforest?

Wet ☐

Snowy ☐

Dry ☐

Cold ☐

**Answer the question below.**

5. What would you find in a savanna? \_\_\_\_\_

\_\_\_\_\_

**Tell Odd one thing you know about hot places.**

\_\_\_\_\_







# HOT PLACES

## 1. Draw lines to fix the broken sentences.

The hottest places on Earth

that splits the Earth into two halves.

The Equator is an invisible line

elephants, lions and zebras.

Savannas are home to

are found near to the Equator.

## 2. Name three types of hot places.

---

---

---

## 3. The capital letters and full stop are missing. Put them back in.

the equator is halfway between the north pole and the south pole

---

---

## 4. Choose a word from the box to finish the sentences.

invisible

savannas

deserts

equator

\_\_\_\_\_ are sometimes wet and sometimes dry.

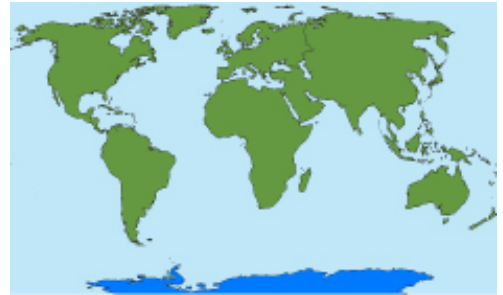
Some \_\_\_\_\_ have very hot, dry weather.

## Both the Arctic and Antarctic are very cold places.

The Arctic can be found on the top of a globe.

Antarctica is on the bottom. This continent surrounds the South Pole.

The North Pole is in the Arctic. Here, ocean is covered by thick ice.



World map with Antarctica in blue



The Arctic Ocean is covered in ice

Arctic countries include the USA (Alaska), Canada, Norway and Russia.

Antarctica is the coldest place on Earth.



Fur seals on the ice

The sun doesn't come up for six months in this continent! This is Antarctica's winter.

Giant lumps of ice that float in the cold sea around Antarctica are called icebergs.



Special clothing to keep warm

On land, very few plants grow in Antarctica.

People live in lots of cold places. They find special ways to keep warm.

### Key words:

Arctic

Antarctic

continent

float

icebergs

surround

## Guided Reading – Cold Places Discussion Sheet

### **Before Reading – Prediction activity**

Ask your students these questions before and after reading the text. Have students skim the text to help with prediction before reading.

Statement	Before	Reading	After	Reading
	Yes	No	Yes	No
A. Based on the pictures, you are going to read about hot places.				
B. The Arctic is a cold place.				
C. Icebergs are found in cold places.				
D. Very few plants grow in cold places.				

**During Reading** – Help with pronunciation, understanding and decoding.

**After Reading** – Have students complete the following activities on an erasable white board or on a blank sheet of paper. Students should share responses after each question. You can document responses below.

1. Where are really cold places found on the globe?
2. Name a country near the Arctic.
3. Write a new word you have learned in this text. (Check spelling)
4. Ice that floats in the ocean is called what?

Notes:



# COLD PLACES

**Finish the sentences.**

1. The Arctic and Antarctic are very \_\_\_\_\_ places.
2. The \_\_\_\_\_ Pole is in the \_\_\_\_\_.

**Tick the answer.**

3. Which of these is not an Arctic country?

Canada	<input type="checkbox"/>	Australia	<input type="checkbox"/>
Norway	<input type="checkbox"/>	Russia	<input type="checkbox"/>

4. Antarctica is the \_\_\_\_\_ place on Earth.

coldest	<input type="checkbox"/>	wettest	<input type="checkbox"/>
hottest	<input type="checkbox"/>	busiest	<input type="checkbox"/>

**Answer the question below.**

5. Where is it dark for six months? \_\_\_\_\_

**Tell Odd one thing you know about cold places.**

---

---





# COLD PLACES

## 1. Draw lines to fix the broken sentences.

The Arctic can be found

are called icebergs.

Antarctica is the

on the top of a globe.

Giant lumps of ice that float

coldest place on Earth.

## 2. Name four things you would pack if you were visiting a cold place.

\_\_\_\_\_  
\_\_\_\_\_

\_\_\_\_\_  
\_\_\_\_\_

## 3. The capital letters and full stop are missing. Put them back in.

the north pole is in the arctic

\_\_\_\_\_  
\_\_\_\_\_

## 4. Choose a word from the box to finish the sentences.

covers

surrounds

continent

float

Antarctica \_\_\_\_\_ the South Pole.

Icebergs \_\_\_\_\_ in the cold sea.